



**Kaitiaki
Kindergartens**

**NORTHERN AUCKLAND
FREE KINDERGARTEN ASSOCIATION INCORPORATED
t/a **KAITIAKI KINDERGARTENS**
CC22455**



2021 ANNUAL REPORT

TABLE OF CONTENTS

A. ABOUT US

B. STRATEGIC DIRECTION

C. PRESIDENT'S REPORT

D. GENERAL MANAGER'S REPORT

E. ENVIROCHOOLS REPORT

F. CELEBRATIONS OF 2021

G. FINANCIAL STATEMENTS

H. BOARD MEMBER ATTENDANCE OF MEETINGS / LIFE MEMBERS

I. ACKNOWLEDGEMENTS



ABOUT US

VISION

"Every child will believe that they can achieve their dreams and aspirations"

PURPOSE

"To provide a high quality early childhood education service that enables each child to leave us with a passion for learning and life"

VALUES

Aspirational

We strive to be the best we can be in all we do

Hauora

Our mind, body and spirit will be healthy and will grow together

Sustainability

We will build a viable and long lasting organisation that reflects quality practices

Excellence

High quality, continuous improvement and innovation are our cornerstones



Kaitiaki
Kindergartens

Strategic Direction 2021 – 2023

He waka eke noa

We're all in this together

Whānau & Community Engagement

- That whānau and community have opportunities to engage with and contribute to their local service
- Our services are seen as an integral part of their local community
- Our communities understand the kindergarten point of difference
- Whānau are engaged as partners in their children's learning

Educational Excellence

- The principles of Te Tiriti o Waitangi (partnership, participation and protection) are demonstrated in our teaching practices
- We enable children to gain a strong foundation for ongoing learning
- High quality teaching and learning is evident in all of our services
- Our teachers have the capability and support to be innovative and responsive to their communities

Future Focus

- We articulate, maintain and promote kindergarten point of difference
- Our services are responsive to the needs of communities
- We provide leadership and influence to the Early Learning sector
- We commit to the Kindergartens Aotearoa Integration Plan

PRESIDENT'S REPORT

Tēna Koutou Katoa - ngā mihi mahana kia koutou,

Overview – Tirohanga

When I reflect on this past year, I am filled with pride for our teams across all our centres. They have been innovative in their teaching, flexible in their approach and above all kind and caring to all tamariki that come to our centres.

It has been a challenging period for our service leaders and the management team as they juggle the impact of covid, government mandates and all whilst providing amazing support to our teachers and support staff, enabling them to do what we are here for, to care and nurture young minds.

The focus on our financial performance as an overall organisation has continued to be a key component as we look to extend provision into new areas, with the hope that we can open a new centre in the foreseeable future. The sound fiscal management of our 14 centres has continued to be strong, which is key to our long-term future, albeit Covid has impacted our ability to collect donations and hold fund-raising events - something we have always relied on.

Collaboration - Mahi Ngātahi

The collaboration with Auckland Kindergarten Association and Inspired Kindergartens (Tauranga), as part of the Northern Hub ethos under Kindergartens Aotearoa has continued through this year. In fact, the closer working practices with all the foundation members of Kindergartens Aotearoa has provided great insights and support through the year. In particular we have been able to have our voice heard at a national level, leveraging the work from Kindergartens Aotearoa helps to strengthen the voice and future of kindergarten.

Kindergartens Aotearoa

I will be providing an opportunity to hear a full update on the progress of Kindergartens Aotearoa before the AGM but as an overview we have continued to work with the other 7 foundation members of Kindergartens Aotearoa. However, this has been severely hampered by the impact of dealing with Covid related issues across the centres nationally.

With the timeline being severely impacted by Covid we are continuing to discuss how we can create a national, single, Kindergarten entity that can enhance and uplift the profile and stature of Kindergarten across Aotearoa.

Acknowledgements - Hei mihi

I would like to take this opportunity to thank the current board. I want to thank Nicole, our Vice President for always being available, helpful, and picking up items without a moment's notice. To our Board Members Alexia, Grant, Katherine, Ivor & John, a huge thank you for the great discussions and hard work on the board. A special thanks to Tui our Teacher Representative on the board who always brings the voice of the teacher and an educator's perspective to our meetings. Having a settled and consistent board over the last few years has provided a stable governance for the Association.

To the management team, Alison, Angela, Wendy, Deborah, Tracey and Dianne, your continued hard work and commitment across all our centres is always appreciated.

To our GM Bram, a huge thank you for leading our Association so well, especially through the difficulties in navigating through Government mandates and Covid related "administration".

The AGM gives us time to reflect, but we have positive plans for the next year and even with the impact of Covid we still have good momentum. We remain in a sound financial position and our

teaching teams are doing a wonderful job serving our communities. We look back on the success we have experienced over the past year and look forward to another year providing high quality learning experiences for our tamariki.

Ngā mihi nui

Paul Geden

President

Northern Auckland Free Kindergarten Association Incorporated

T/A Kaitiaki Kindergartens

GENERAL MANAGER'S REPORT

Tena koutou katoa

It is fair to say that 2021 did not turn out to be a year of settling down after all the disruption and upheaval of 2020 due to Covid 19. I think our prime minister described it well when she said "as the virus keeps evolving, so are we".

I have been very impressed with how our tamariki, whānau, kaiako and support staff continue to develop and adapt through changing restrictions and instructions in different levels and colours of the Covid response. Who would have thought back then that 2 years on it is still impacting our lives in significant ways? I want to thank you all for supporting the teaching teams through the different drop-off and pick-up procedures, masks and social distancing requirements and for the ongoing support for your centre and teaching team - Maha nga mihi.

During the year we said farewell to 6 teachers (including 2 headteachers) and 7 support staff. Some have retired, some took up new jobs or started their own business and a couple to the education Covid mandate. Haere ra, thank you for your mahi and contribution to Kaitiaki Kindergartens. A special shout out to our relievers, thank you for your ongoing support for the association and teaching teams through these disruptive and uncertain times. Without you we are not able to maintain our high standard of service for our tamariki and whanau.

The small team at our support office continued to keep everything working smoothly throughout the constant changes and requirements, both in the office and or, remotely. Alison maintained solid leadership and a steady hand in the daily management of the support functions and team. Both Wendy and Deborah were able to mix remote and in person support and professional guidance to the teaching teams. Angela quickly established herself with operational support for the teams to ensure we meet and exceed the required standards, regulations, and compliance, in an efficient and effective way. Tracey and Dianne never miss a beat with the back-office functions, like clockwork!

During 2021 we started to see a drop in the number of enrolled children across the network. Our Association started 2022 with 762 children enrolled, a reduction from the 825 children prior to the lockdown in August 2021. As expected, we have continued to see a variation in attendance levels throughout 2021 and averaged 90% enrolment across the centres.

We have continued on with our 'business as usual' approach, with regular repairs and maintenance and all centres are in good condition, inside and out. After some delay, we will continue with the upgrade to our ICT infrastructure in the new year.

Our collaboration and sharing between the 3 associations that started as the Northern Hub of Kindergartens Aotearoa - Inspired (Tauranga), Auckland and Kaitiaki Kindergartens has remained strong during the year, as well as with the other 5 partnering associations. This has particularly been of great value during the changing requirements of the Covid alert levels. The mahi continues despite the distractions and disruptions.

Finally, I want to acknowledge our Board with Paul's leadership as President. Paul's role as Chair of the Kindergartens Aotearoa Board has meant that the Kaitiaki Board and management team has been well informed of any developments during the year. Nicole continues in her seat with the AKA Board in addition to her Vice President role for Kaitiaki. A great demonstration of the close relationship between the two associations. My thanks to Grant, Alexia, John, Ivor and Katherine for your ongoing support to Kaitiaki Kindergartens and for Tui in her role as Teacher Representative, ngā mihi nui ki a koe

Nāku noa, nā

Bram Kukler, General Manager

ENVIROSCHOOLS REPORT

While our association, along with most of Aotearoa spent a large portion of the year under lockdown restrictions, we still managed some great achievements across the Enviroschools kaupapa.

Our biggest celebration of this year was Parakai Kindergarten who reflected and received their Bronze award in June (photo below). After working together as a new team and continuing their focus as being a central part of the Parakai community, they received this well-deserved acknowledgement.

This year we have also had Orewa Beach, Parakai, Oaktree, and Taiotea kindergartens involved in the NETR project. This is an opportunity created by Auckland Council and the Sustainable Schools team to be involved in a project designed to help Aucklanders value nature and take action to enhance and protect nature. It is an opportunity that will be offered out to other services on a staggered basis as funding allows. Our teams were excited for an association-wide sharing session to happen over the October term break. We had Mahurangi Kindergarten prepping to share their successes in forest regeneration and rodent elimination, Stanmore Bay talking about the Whitebait Connection and their 'Love Food Hate Waste' workshops, and Orewa Beach taking time to share their nature walk stories. Teams have been asked to hold onto all of these thoughts and ideas for sharing so that when it is possible, we can continue with coming together and sharing our mahi.

In collaboration with the Toimata Foundation there has been a number of Zoom PD opportunities (Zui's) that Kaitiaki teachers have attended. The 'Introduction to the new ECE handbook', and the 'Moving on from Bronze' workshops proving to be most popular.

A highlight of the year for us all, was the Key Teachers Hui that went ahead in June. This was a day to bring together one teacher from each service, to share current goals and focusses amongst our teams. Everyone left inspired and motivated to continue for the year. Teams also connected with each other and realised how much common ground there is between teams.

While again, it has been quite a fragmented year, I feel lucky to have been a part of the Kaitiaki Enviroschools journey and look forward to a productive and exciting 2022.



CELEBRATIONS OF 2021

ALBANY KINDERGARTEN

2021 has been a year of uncertainty and surprises for all of us. I don't think that any of us expected our time staying at home to be anywhere near as long as it turned out to be. We managed to enjoy our disco at kindergarten, but we had to rework our art show into an online event. Even though we were presented with so many challenges the whole team worked together to provide our whānau with some fantastic online learning opportunities. Everyone enjoyed the stories and activities that we shared with them, and whānau kept us up to date with what they were doing at home.



It was wonderful to see that much of the work that we had been doing at kindergarten in our vegetable and butterfly gardens continued when tamariki were at home. We were able to share some wonderful stories and pictures of the bug hotels that were built and the interesting finds on scavenger hunts. One of the highlights of our year was raising some frogs from tadpoles. We had watched them with interest as they grew and changed. We continued to watch our tadpoles from a distance as we were confined to home and were very excited when our tadpoles grew into little frogs.

It was wonderful to find that as children came back to kindergarten, they were able to return to the familiar setting and enjoy the continuity that came from our sharing on Storypark.

We couldn't have done this without our team at Support Office sending us encouragement and kind words when it seemed that we would never get back to kindergarten.

BROWNS BAY TAIATEA KINDERGARTEN

2021 has been a rollercoaster of a year with Covid -19 level changes, 'bubble kindergarten', online learning and somewhere squeezed into all this, kindergarten that we all know and love.

Our year started with our children engaging with the Wai is a Taonga programme which encouraged tamariki to think about their use of water and ways to protect our local awa—the Taiaotea Stream. We were fortunate to take a walk to our awa and see some of the creatures that call this waterway home before celebrating together as our new rainwater tanks were revealed.

We hosted a whānau evening in April around 'Developing the Whole Child'. Kaiako presentations looked at how to nurture children's social and emotional competencies, support emergent literacy and language and how children engage in Science in Early Childhood Education.

We welcomed back Kaiako Sarah Powell (Maternity Leave), Tarryn Wendt (Support Worker) and also farewellled Kaiako Natalie Norwood (Maternity Leave). In May we welcomed Kaiako Natalie Griffiths who quickly became a valued member of our team.

We celebrated the Dragon Boat Festival in June, Matariki with a shared hot lunch that the children helped prepare and a Disco on the last day of term before August saw another change with kindergarten back online and kaiako, tamariki and whānau adjusting quickly to online learning. Birthdays were celebrated and children farewellled on their journey to online kura. Online learning helped us celebrate Halloween, Chuseok (Korean Moon festival) Otsukimi (Japanese Moon viewing celebration) and the Chinese Moon Festival, with our whānau preparing videos to share with our community.

Zoom mat times connected us with the National Aquarium in Napier and the Zero Waste Zone in Waitakere while kaiako created resources and numerous videos each week to support children's learning at home. Our learning hard packs delivered by kaiako to whānau were warmly received and help boost supplies at home to ensure all could engage.



GLAMORGAN KINDERGARTEN

For so many years one of Glamorgan Kindergarten's long-term plans was to build a Whānau Room. Early in 2021, we were ready! Plans had been finalised, documentation completed, then Covid hit and delayed everything.

Luckily Covid settled down long enough and created an opportunity for our long-awaited Whānau Room to be built. The builders were very efficient, and it was mostly done within a month. We had an official opening during the first week of Matariki and a shared lunch including a kaumatua who gave a blessing on the building, Alison, our 2IC GM, cut the ribbon, the trades people came back and of course most importantly, our tamariki and their whānau all helped us to celebrate.



It is a beautifully built building with an important purpose specially with our community in mind - a place where we could invite our whānau to use it as a place to retreat if needed and to have private meetings with teachers away from the view of others. It has been well used for special needs therapy for individual tamariki, a safe space for younger siblings to settle while their parents settle their kindy child, and a quiet space for teachers to work on their non-contact work and to have lunch in peace.

Then Covid came back with a vengeance and more lockdowns. We have noticed a big impact on anxiety levels for both tamariki and whānau, therefore our big focus has centred around supporting 'a sense of well-being' for our tamariki and their whānau.

Our kaiako (teachers) have become incredibly adept to thinking outside our usual style of face to face learning and developed amazing skills in online learning using iMovie. Kaiako have all utilised zoom meetings to connect with our tamariki and designed a learning programme that supported children to keep connected, think creatively, explore with simple science, engage in literacy through story-telling and fun music and movement activities.

What we know through this whole experience is we have a great community of learners who are strong and resilient! We have the most amazing teaching team who despite the challenges that covid has thrown us, have still worked cohesively to provide an educational learning experience to support our community. I couldn't be more proud of us!

HOBSONVILLE POINT EARLY LEARNING CENTRE

While we reflect on 2021 the initial thoughts head to lockdowns, teaching and learning from home, connection with whanau through Zoom and Storypark, and generally another year driven by a focus on keeping ourselves and those vulnerable safe. However, on taking time to really look deeper, HPELC had another year with so many more highs than lows. Though a very large portion of our year didn't run as it usually would - the achievements and moments of celebration are everywhere. We continued to take our tamariki on local nature walks, exploring the land and enjoying the many outdoor spaces Hobsonville Point has to offer. We focussed on connecting with our local community by our regular visits to the lifestyle village, this is a monthly excursion where we help to celebrate the residents' birthdays, these visits provided such a sense of meaning this year especially, as so many of these people have been effected by border closures and their own families unable to visit.

We also had our first colour run, organised by the primary school, this was a highlight for our Tuakana children, as we ran through the rainbow of colours, supported by both older school-aged siblings, and previous children from the centre.

We managed to have our mid-year Matariki celebration and enjoyed being able to celebrate with our families after so many missed events.

During the year we had many mini events within the centre, athletic days, bike days, and many opportunities to dress up and share in some extra fun with the children.

We also farewelled some of our team, saying goodbye to Cyrus, who left us to move to sunny Northland and enjoy his retirement, and some temporary farewells to team members who have taken maternity leave. With that means the welcoming of new teachers who have quickly become such integral and valuable members of our HPELC whānau.



MAHURANGI KINDERGARTEN

Despite Covid having a big influence in 2021, we still managed to have a fun and stimulating time. We started the year celebrating Chinese New Year and Waitangi Day to learn about our own and other cultures. We even managed to sing some Easter songs to our friends at Summerset Falls Village with cute bunny ears on our heads.

We held lots of exciting events for the children during session like having a Teddy Bears Picnic, Wacky Wednesday, Pyjama Day, making Friendship soup, learning how to do Print Making, Halloween, holding our own Olympics, creating an Obstacle course, growing Sunflowers, Dress up day, Wet and Wild day, and so much more!

Due to Covid Lockdowns, small 'bubbles', level restrictions and such, teachers upgraded their ICT skills to organise 'Distance Learning' for our children. Teachers learnt how to make videos, hold zoom meetings and think about what activities children could do at home with their family/whānau. Teachers opened their homes to the children to show them their animals, gardens, and themselves at home. We believe this brought us closer to our families who also shared with us photos, video and stories of what they were doing at their homes.

We were able to finish the year by filming our children singing Christmas Songs which we posted onto Storypark for all their families to see. We even had a surprise visit from Santa!

Distance Learning Photos



OAKTREE KINDERGARTEN

2021 saw many changes to learning for us all and as everyone else tried to adapt, at Oaktree Kindergarten the children and teachers found positive ways to stay in touch and connected with one another. With much of the time during the year taken up with online learning and bubble kindergarten, this gave tamariki and kaiako the chance to connect on a different level where more personal learning opportunities presented a holistic view of both children and teachers.

Photos, videos and zoom chats showed everyone in their own secure environments connecting with each other and sharing aroha. Online learning challenged the team to be creative on a different level and homed in on differing levels of technology competence where peer tutoring and support allowed us to get through as a team.

The online learning process allowed for reflective practice by the team when more time was available for research, internal evaluation and focus on professional growth cycles. With the disruption of Covid and the separation of tamariki and friends at kindergarten, 2021 was a year of fostering relationships, displaying manaakitanga and being kaitiaki for ourselves and those around us. Returning to kindergarten in term 4 with lower numbers gave some children a quieter environment to re-settle and re-connect along with kaiako and friends.

For us at Oaktree Kindergarten, the kaupapa of 2021 can be summed up in the classic Māori whakatauki...

He aha te mea nui o te ao

He tangata, he tangata, he tangata

What is the most important thing in the world?

It is the people, it is the people, it is the people

Zoom Mat Time



8th September 2021

OREWA KINDERGARTEN

Orewa Beach Kindergarten faced a challenging 2021 as did others within Kaitiaki Kindergartens. We were so thankful however to be able to hold our Annual Ducky Derby fundraiser in March. Our parent committee and families worked tirelessly from August 2020 engaging the wider Hibiscus Coast community in supporting this event which raised much needed funds enabling us to purchase new furniture and upgrade resources.



Visits from our community Mobile Library Bus returned and children enthusiastically watched out for its arrival in the hope that it was their turn to “hop-on-board” and enjoy searching for a favourite book. These visits from the library have continued all year when the levels allowed.

Connections and relationships with Orewa College, our next-door neighbours, remain strong. We continue to support their students by way of visits from their year 8 classes and Gateway students which is reciprocated by them sharing their cultural and music groups with our tamariki.

As an ‘Enviroschool’, Orewa Beach Kindergarten identify the benefits our children gain from being involved in regular nature walks in our local area. When able to this year, our tamariki have enjoyed a focus on bird life in our environment whilst partaking in these walks. Children gained an understanding of the main predators to our native birds and took responsibility for placing ‘chew cards’ on trees along our regular route, and on following visits being able to identify particular predators.

Our focus this year was on the wellbeing of our tamariki, particularly during lock down but also when we were able to return to kindergarten. Our children became very familiar with a book entitled ‘Have You Filled a Bucket Today?’ which supported their understanding of feelings and how to self-regulate them.

Fortunately, we were able to hold our annual disco and special events like Grandparents Day and our very popular week long Matariki celebrations culminating in a Matariki breakfast for the families to attend.

During lock down, the team used prior knowledge and experience gained from previous lockdowns to provide valuable online content to our children and their whānau. Our focus was to maintain connections with each other and to build relationships with new families being enrolled during this period.

We have this year welcomed a new member to our team, Justine, who will take the role of both Administrator and Teacher Support. The rest of our team remain constant and dedicated to the wellbeing of our tamariki and their families.

PARAKAI KINDERGARTEN

We had a fantastic sunny start to the year, with a lot of water and mud play. One of our favourites being a water slide, which was requested most days. There was a lot of extension on physical learning. A new spin bar and slack line proved to be valuable additions to challenge the tamariki. Whilst inside we had a lot of fun doing yoga as we introduced the M3 mindfulness programme.



The creek next door to us recieved a clean up where we learnt about where rubbish goes. We discovered we had a pest issue, when we found some possum droppings in the garden. This sparked an incredible learning journey about possums and pests in Aotearoa and the effects on our native birds.

Some incredible art work was made in the carpentry and glue gun areas. Tamariki shared and displayed these works with so much pride. An interest in Maori Myths and legends led to a lot of stories being read, influencing art and plays, with Maui becoming a kindergarten hero.

We were lucky enough to hold many social events such as a whānau BBQ, a ladies night, a cupcake stall at the local school event and a Matariki disco night before the August lockdown began.

The long lockdowns created a time for the kaiako to share more about themselves and brave the cameras to share their pets and farm life at home with the tamariki, creating some amazing relationships in the process. Zoom and video mat times were treasured by the tamariki that could join in and there was a lot of fun had with games and treasure hunts.

RANGITOTO KINDERGARTEN

The year that was 2021 was most assuredly a year that presented many challenges for tamariki, whānau and the team, but thinking outside the box ensured there were still many highlights and surprises to celebrate!

Lockdowns continued throughout the year and there were months that we did not see each other and we searched for ways to sustain the heart of kindergarten - whanaungatanga / relationships. Special events such as our much loved Rangitoto Kindergarten Fair were cancelled for the second time in thirty years.

While Covid disruptions became part of our 'new normal', we discovered how to flourish in new ways during lockdown. We created individual letters for tamariki, provided resources for home, opened a book lending Library, found unique ways to keep in touch with our families, held Committee meetings via Zoom, had regular community check-ins through Facebook and articles in our local community news magazine.

Distance Learning enabled new talents to emerge with some innovative videos created by the teachers, along with activities for children to try out at home and zoom mat-times.

We embraced the moments we were able to be together as a community, we...

- where possible, went on weekly Nature Kindergarten adventures,
- visited the Viaduct Basin to see the Americas Cup boats,
- celebrated the Lunar New Year,
- celebrated Matariki with a Kapa Haka Concert and kai.
- celebrated our own Olympics at the Millennium Stadium Track.
- welcomed a wonderful array of vintage cars to visit the kindergarten along with a trip to Motat,
- went on adventures to North Head, Kelly Tarlton's and Wastecare.
- created a Re-cycled Wonderful World of Wearable Art Costume show.
- created a "Gallery in the Garden" in our Community Garden to connect with our whānau

... and finally finished the year with a very socially distanced, but magical, visit from Santa under the Kindergarten's plum tree!



SILVERDALE KINDERGARTEN

Silverdale Kindergarten started the year with much enthusiasm, celebrating Waitangi Day and Chinese New Year with the children and whānau; with shared soup and homemade sushi in response to tamariki requests. We celebrated Easter with hot cross bun making, and Mothers' Day with a 'Stay and Play' morning tea. Gumboot Friday was also acknowledged, and we raised some money for this great cause.

At the end of term one, we were able to squeeze in an outstanding fundraiser -Bikeathon - just before our first big lockdown. Our community really pulled together with stalls and lots of fun times on the day – this saw us build stronger connections with families, the local school, and the community. We opted to use an online fundraising forum 'raise-it' which enabled us to receive sponsorship online from all over the world. This really reflects the diverse cultures we have at kindergarten and was pivotal to the \$7,000 that was raised which will go towards developing our outdoor space and resources.

Term 3 saw us with a particular curriculum focus working with the "Whitebait Connection's - Ko te wai he taonga" – water is a treasure- through which tamariki learnt about the water cycle and the importance of our local stream. Two new water tanks were gifted to us as part of this programme.

Although it has been sad to see some team members move on to new adventures, we have been very fortunate to welcome Debby to our team as our support staff member and Sharon Barnett who joined us as our Head Teacher just before another lockdown.

We are very proud of the way our team and community adapted to the challenges of the year as we all worked together to continue to support our amazing tamariki. The team did a fantastic job at staying virtually connected, with daily posts, zooms, stories, poems, science experiments and ensuring all birthdays were celebrated online. Some amazing new resources also came to fruition as teachers got creative while they were locked down at home.

Coming together for a special fun day of dress up with our tamariki and shared fish and chips was the perfect way to round of a very unusual year!



STANMORE BAY KINDERGARTEN

We started the year off with a fabulous children's bathroom renovation, and a deck extension complete with a shade sail that has made the space much more user friendly and has modernised our special piece of paradise. We further complemented our outdoor space with a magnificent shade umbrella on our lower lawn which has enabled us to really make great use of this outdoor space in summer and on rainy days – a reprieve on the hot and sunny days along with a fun and dry space to play outside while it is raining!



We managed to have a lovely community cultural celebration for Matariki, with the tamariki taonga artwork on display, inspired by shapes, patterns and forms from Māori culture and nature. Our families enjoyed a moving kapa haka performance by our tamariki and we shared a meal of significant cultural foods provided by our whanau.



And of course, we cannot forget COVID, and its impact! We consolidated our prior experiences from previous COVID lockdowns and learning from home. Our priority was continuing to maintain and form strong relationships with our tamariki and whānau; to keep a consistent and familiar teaching and learning presence in the daily lives of our tamariki, with our whole team present at our daily Zoom mat times, each kaiako taking turns to be the host. We enjoyed a pattern of familiar welcome songs and our pepeha, followed by a wide range of music and movement, stories and topical conversation, experiments, inquiries, and familiar learning experiences. We noticed that many families came together to join in the mat times as they participated and contributed to the live and engaging mat times. When it was finally time to return to kindergarten, in our bubbles, and as the wider group, it was encouraging to see our efforts pay off. The children were incredibly excited to be back in our familiar space and with their teachers and we were just as delighted to be with them.

We remain a passionate, consistent, and stable team, where tamariki experience the value of kindness to themselves each other and our environment.

TORBAY KINDERGARTEN

We started the year with our beautiful Te Whare o te Pūrerehua. The tamariki were very much a part of caring for these creatures. As their knowledge grew the children were able to tell whether a male or female had hatched. They became wonderful parents watching over their whānau. We celebrated each release with waiata and good wishes. By the end of the season we released 75 pūrerehua into our environment.

We visited our maunga, traveling by sea to walk on Rangitoto. This maunga has so much significance for our tamariki as it watches over us when we are out in the community and when we visit Waiake beach. With incorporating our beach trips into consolidating their knowledge, our tamariki have a wonderful sense of belonging. This inspired us to review and enhance our kindergarten pepeha. We did some historical research to share with our whānau and inform ourselves as teachers.

We also had good turnouts for our Market days. Our whānau raid their gardens, make wonderful jam etc and bring it along to add to whatever comes out of our kindergarten garden. The tamariki embrace the swapping/ shopping! They return home with bulging bags of goodies. 2021 was very community based as we managed to have our annual Quiz Night to raise money for our gardens and sustainability programme. It is always a celebration of how committed our community is to the success of our wonderful kindergarten and the place we hold in our community



WAIMAUKU KINDERGARTEN

2021 was an eventful year for our Waimauku Kindergarten whānau, tamariki and kaiako. After getting back on our feet from the first covid lockdown, settling tamariki back into kindergarten life, our focus was on the wellbeing - whanaungatanga of our tamariki and whānau, and re-establishing our daily routines and reconnecting with one another.



For kaiako a large part of our focus was taking part in Te Whatu Pokeka, professional development with Arvay Armstrong-Read. We identified the need for further professional learning to deepen our understanding for our Māori tamariki. Te Whatu Pokeka has been an inspirational and meaningful learning journey for our team. Our growth and understanding can be seen and is evident in our current documentation, planning and assessment for individual and group learning. There has been a huge shift in our assessment practices and this has flowed through into reviewing our philosophy, curriculum wall and large group planning. This has been an amazing journey with positive and in-depth feedback from whānau.

Once again we were in lockdown and our online learning started, with daily learning posts and story times with Rachel. Our online story time was an effective way to stay connected with tamariki and whānau, becoming a daily routine for many. It was a challenging time for all with everyone feeling the effects in different ways. In the short amount of time we were back at kindergarten we said goodbye to Alison our long-standing teacher who retired and have since welcomed Kylie into our team. We look forward to a more settled year in 2022.



WHANGAPARAOA KINDERGARTEN

At Whangaparaoa Kindergarten, 2021 was a year of community, collaboration, inclusion, culture and exploration.

We welcomed Nicole Saggars as Teacher Support, farewelled teacher Heather Sturrock and appointed Erin Crawford.

Kaiako did a marvellous job of negotiating Covid level changes and planning amazing experiences for nga tamariki and whānau.

At the beginning of the year we held our annual Wheel-a-thon, which with Raise It was a successful fundraiser. Our Kapa Haka rōpu participated at the Whangaparaoa Primary Gala in March and again at kindergarten in June for our Matariki celebration. This fabulous whānau event included a children's art exhibition and a family food festival. Our Pink Shirt Disco was an opportunity to support kindergarten and share the message of acceptance and kindness. We came together for our Pink Ribbon Breakfast, lots of whānau joined us and donated to this important cause.



We enjoyed excursions to Zero Waste Zone, Chipmunks and the 'Manly Explorers' developed leadership and kaitiakitanga with trips to Big and Little Manly beaches, and our piece of bush 'Shuttleworth Reserve'.

The Olympic games created an opportunity for children and teachers to create teams to represent where their whānau originated from and compete in a friendly games event.

In the latter part of the year lockdown kept us away from kindergarten and kaiako provided amazing online learning opportunities to keep our kindergarten community engaged and connected. Children and staff first returned to kindergarten in bubbles, before everyone finally was able to return in mid-December. 'Elfie' suddenly arrived bringing kindness challenges up to the end of the year.



Kaitiaki Kindergartens

NORTHERN AUCKLAND FREE KINDERGARTEN ASSOCIATION INCORPORATED

**CONSOLIDATED FINANCIAL STATEMENTS
FOR THE YEAR ENDED 31ST DECEMBER 2021**

GROUP SUMMARY FINANCIAL STATEMENTS
STATEMENT OF FINANCIAL POSITION
NORTHERN AUCKLAND FREE KINDERGARTEN ASSOCIATION INCORPORATED
AS AT 31 DECEMBER 2021

	2021	2020
Current assets		
Cash and cash equivalents	3,662,062	2,697,735
Short term investments	3,257,151	2,830,167
Receivables from exchange transactions	7,498	10,370
Receivables from non-exchange transactions	14,537	25,335
Prepayments	29,734	31,639
Amounts due from related parties	-	-
	<u>6,970,982</u>	<u>5,595,246</u>
Non-current assets		
Property plant and equipment	6,228,060	6,427,821
	<u>6,228,060</u>	<u>6,427,821</u>
TOTAL ASSETS	13,199,042	12,023,067
LIABILITIES		
Current liabilities		
Payables (from exchange transactions)	396,805	269,010
Payables (from non- exchange transactions)	1,412,259	1,401,257
Employee benefits	503,085	393,537
Provision for cyclical maintenance	213,615	140,381
	<u>2,525,764</u>	<u>2,204,185</u>
Non-current liabilities		
Provision for cyclical maintenance	324,196	189,704
	<u>324,196</u>	<u>189,704</u>
TOTAL LIABILITIES	2,849,960	2,393,889
TOTAL NET ASSETS	10,349,082	9,629,177
Net assets		
Accumulated comprehensive revenue and expense	10,349,082	9,629,177
Revaluation reserve	-	-
Total net assets attribution	10,349,082	9,629,177

For and on behalf of the Board:



Nicole Thompson
Vice President

10th March 2022

Date


Abraham Kukler
General Manager

10th March 2022

Date

GROUP SUMMARY FINANCIAL STATEMENTS
STATEMENT OF COMPREHENSIVE REVENUE AND EXPENSE
NORTHERN AUCKLAND FREE KINDERGARTEN ASSOCIATION INCORPORATED
FOR THE YEAR ENDED 31 DECEMBER 2021

	2021	2020
Revenue from exchange transactions	514,459	585,249
Revenue from non-exchange transactions	9,386,287	8,618,467
	9,900,746	9,203,716
Expenses		
Employee costs	7,707,189	6,981,303
Distribution to Kindergartens	-	-
Office Administration	779,088	870,941
Depreciation	304,544	327,906
Cyclical maintenance expense	207,726	(12,873)
Other operating expenses	217,347	227,687
Total expenses	9,215,894	8,394,964
Finance income	35,054	46,115
Finance costs	-	-
Net finance costs	35,054	46,115
Net surplus for the year	719,906	854,867
Total comprehensive revenue and expense for the year	719,906	854,867

GROUP SUMMARY FINANCIAL STATEMENTS**STATEMENT OF CHANGES IN NET ASSETS/EQUITY****NORTHERN AUCKLAND FREE KINDERGARTEN ASSOCIATION INCORPORATED****FOR THE YEAR ENDED 31 DECEMBER 2021**

	Accumulated comprehensive revenue and expense	Total
Group		
Opening balance 1 January 2020	8,774,310	8,774,310
Surplus for the period	854,867	854,867
Other comprehensive revenue and expense	0	0
Total consolidated comprehensive revenue and expense	854,867	854,867
Closing equity 31 December 2020	9,629,177	9,629,177
Surplus for the period	719,906	719,906
Other comprehensive revenue and expense	-	-
Total consolidated comprehensive revenue and expense	719,906	719,906
Closing equity 31 December 2021	10,349,082	10,349,082

GROUP SUMMARY FINANCIAL STATEMENTS
STATEMENT OF CASHFLOWS
NORTHERN AUCKLAND FREE KINDERGARTEN ASSOCIATION INCORPORATED
FOR THE YEAR ENDED 31 DECEMBER 2021

	2021	2020
CASH FLOWS FROM OPERATING ACTIVITIES		
Receipts from Ministry of Education funding	8,859,614	8,134,453
Receipts from parent donations	311,530	354,142
Receipts from fundraising activities	85,614	92,095
Receipts from other non-exchange transactions	33,222	48,768
Receipts from parent fees	514,459	585,249
Interest received	35,054	46,115
Payments to employees	(7,597,644)	(6,941,252)
Payments to suppliers	(745,756)	(1,124,864)
Net cash inflow/(outflow) from operating activities	1,496,093	1,194,706
CASH FLOWS FROM INVESTING ACTIVITIES		
Purchase of short term investments	(426,983)	(1,330,167)
Purchase of property, plant and equipment	(104,783)	(101,220)
Net cash inflow/(outflow) from investing activities	(531,766)	(1,431,387)
Net increase/(decrease) in cash and cash equivalents	964,327	(236,682)
Cash and cash equivalents at 1 January	2,697,735	2,934,416
Cash and cash equivalents at 31 December	3,662,062	2,697,735

NORTHERN AUCKLAND FREE KINDERGARTEN ASSOCIATION INCORPORATED

NOTES TO THE CONSOLIDATED FINANCIAL STATEMENTS FOR THE YEAR ENDED 31 DECEMBER 2021

1. REPORTING ENTITY

Northern Auckland Free Kindergarten Association Incorporation (the "Group") is a non-profit organisation registered under the Incorporated Societies Act 1908. The Association and its controlled entities are public benefit entities for the purposes of financial reporting in accordance with the Financial Reporting Act 2013.

These financial statements were authorised for issue by the Board of Management on the date indicated on page 1.

2. BASIS OF PREPARATION

a) Statement of compliance

The consolidated financial statements have been prepared in accordance with the Charities Act 2005 which requires compliance with generally accepted accounting practice in New Zealand ("NZ GAAP").

As the primary objective of the Group is to provide goods or services for community and social benefit, rather than for making a financial return, the Group are public benefit entities for the purpose of financial reporting.

The Group is a registered charity in New Zealand. The financial statements comply with Public Benefit Entity Accounting Standards Reduced Disclosure Regime ("PBE Standards RDR") as appropriate for Tier 2 not-for-profit public benefit entities.

The financial statements of the Group have been prepared in accordance with Tier 2 PBE Standards and disclosure concessions have been applied. The Group is eligible to report in accordance with Tier 2 PBE Standards because it does not have public accountability and it is not large.

b) Measurement basis

The consolidated financial statements have been prepared on the historical cost basis.

c) Functional and presentation currency

The consolidated financial statements are presented in New Zealand Dollars (\$), which is the functional and presentation currency. All values are rounded to the nearest dollar unless otherwise stated.

There has been no change in the functional currency of the Group during the year.

d) Changes in accounting policy

There has been no changes in accounting policies.

3. GROUP INFORMATION

The consolidated financial statements of the Group include the following subsidiaries of the Association:

Name	Principal activities	Country of incorporation	Equity interest	
			2021	2020
Kindergartens (page 25)	Early childhood education	New Zealand	100%	100%
Hobsonville Point Early Learning Centre	Early childhood education	New Zealand	100%	100%

The reporting date of the Association and all subsidiaries is 31 December.

There are no significant restrictions on the ability of the subsidiaries to transfer funds to the Association in the form of cash distributions or to repay loans or advances.

4. RELATED PARTY TRANSACTIONS

The following table provides the total amount of transactions that have been entered into with related parties for the relevant financial year.

	2021	2020
<i>Transactions</i>		
Payments to Board of Management members	12,764	9,623
Kindergartens & ELCs * (Distributions)	20,500	25,000
Kindergartens & ELCs * (Recovery of Administration costs)	-	(36,827)
Reimbursement of building projects costs to Kindergartens & ELCs *	-	-
	<u>33,264</u>	<u>(2,204)</u>

* ELCs is Early Learning Centres

Terms and conditions of transactions with related parties

Outstanding balances at the year-end are unsecured and interest free and settlement occurs in cash. There have been no guarantees provided or received for any related party receivables or payables. For the year ended 31 December 2021, the Group has not recorded any impairment of receivables relating to amounts owed by related parties (2020: \$Nil). This assessment is undertaken each financial year through examining the financial position of the related party and the market in which the related party operates.

Compensation of key management personnel

Key management personnel of the Association and Group include the General Manager, Executive Leadership Team, and Board of Management members. The total remuneration of key management personnel and the number of individuals, on a full-time equivalent (FTE) basis, receiving remuneration from the Group are:

	2021	2020
Executive Leadership Team (5 FTEs)	460,712	422,611
Board members (0.325 FTEs)	<u>12,764</u>	<u>9,623</u>
Total remuneration (5.325 FTEs)	<u>473,475</u>	<u>432,234</u>

Key management personnel did not receive remuneration or compensation other than in their capacity as key management personnel. (2020: \$0).

The Group did not provide any compensation at non-arm's length terms to close family members of key management personnel during the year (2020: nil). The Group also did not provide any loans to key management personnel or their close family members.

5. GOING CONCERN

The Board on behalf of its members is in discussions with Kindergartens Aotearoa on becoming one of their foundation members. Should this proceed it is likely that professional costs will be incurred however, the Board does not anticipate this to be significant. As no final decision has yet been made at the time of signing these financial statements, the Board has continued to adopt the going concern assumption when preparing these consolidated financial statements.



Report of the Independent Auditor On the Summary Financial Statements

To the members of
Northern Auckland Free Kindergarten
Association Incorporated

RSM Hayes Audit

PO Box 9588
Newmarket, Auckland 1149
Level 1, 1 Broadway
Newmarket, Auckland 1023

T +64 (9) 367 1656
www.rsmnz.co.nz

Opinion

The summary financial statements, which comprise the summary statement of financial position as at 31 December 2021, summary statement of comprehensive revenue and expense, summary statement of changes in net assets/equity and summary statement of cash flows for the year then ended, and related notes, are derived from the audited financial statements of Northern Auckland Free Kindergarten Association Incorporated (Group) for the year ended 31 December 2021. We expressed a qualified audit opinion on those financial statements in our report dated 11 March 2022.

In our opinion, the accompanying summary financial statements are consistent, in all material respects, with the audited financial statements, in accordance with PBE FRS 43: *Summary Financial Statements* issued by the New Zealand Accounting Standards Board. However, the summary financial statements are potentially misstated to the equivalent extent as the audited financial statements of Northern Auckland Free Kindergarten Association Incorporated for the year ended 31 December 2021.

Summary financial statements

The summary financial statements do not contain all the disclosures required by Public Benefit Entity Standards Reduced Disclosure Regime ("PBE Standards RDR"). Reading the summary financial statements and the auditor's report thereon, therefore, is not a substitute for reading the audited financial statements and the auditor's report thereon. The summary financial statements and the audited financial statements do not reflect the effects of events that occurred subsequent to the date of our report on the audited financial statements.

The audited financial statements and our report thereon

We expressed a qualified audit opinion on the audited financial statements in our report dated 11 March 2022. The basis for our qualified opinion was that the Group's reported income includes parent donations and fundraising income of \$397,145 (2020: \$446,240). Controls over parent donations and fundraising income prior to being recorded is limited and there are no practical audit procedures to determine the effect of this limited control. In this respect alone, we have not obtained all the information and explanations that we have required. Our audit opinion on the Group's financial statements for the year ended 31 December 2020 was also qualified in this respect.

Board's responsibility for the summary financial statements

The board is responsible on behalf of the entity for the preparation of the summary financial statements in accordance with PBE FRS 43: *Summary Financial Statements*.

Auditor's responsibility

Our responsibility is to express an opinion on whether the summary financial statements are consistent, in all material respects, with the audited financial statements based on our procedures, which were conducted in accordance with International Standard on Auditing (New Zealand) (ISA (NZ)) 810 (Revised), *Engagements to Report on Summary Financial Statements*. Other than in our capacity as auditor, hawse have no relationship with, or interests in, the Northern Auckland Free Kindergarten Association Incorporated (Group).

Who we report to

This report is made solely to the members, as a body. Our audit has been undertaken so that we might state to the members those matters we are required to state to them in an auditor's report and for no other purpose. To the fullest extent permitted by law, we do not accept or assume responsibility to anyone other than the Group and the members as a body, for our work, for this report, or for the opinions we have formed.

RSM Hayes Audit
Auckland

11 March 2022

THE POWER OF BEING UNDERSTOOD
AUDIT | TAX | CONSULTING

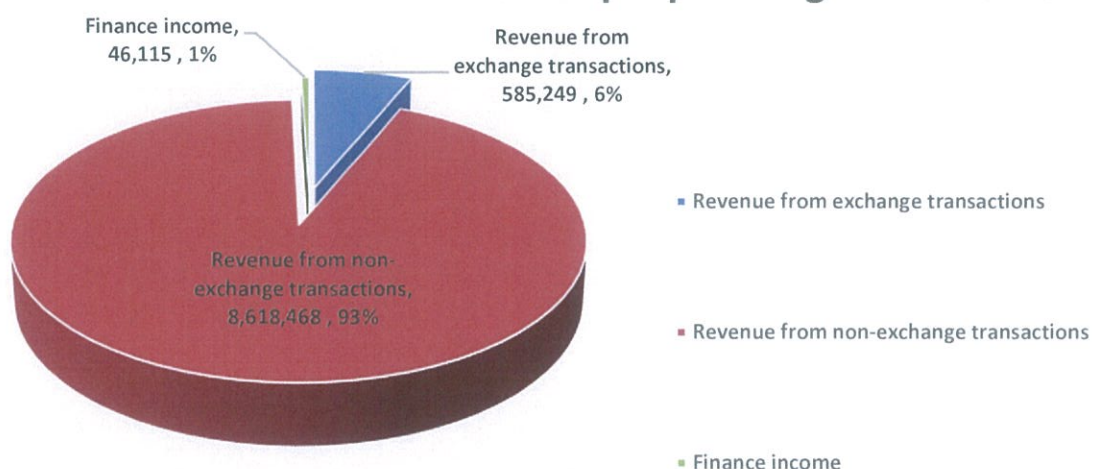
RSM Hayes Audit is a member of the RSM network and trades as RSM. RSM is the trading name used by the members of the RSM network. Each member of the RSM network is an independent accounting and consulting firm which practices in its own right. The RSM network is not itself a separate legal entity in any jurisdiction.

NORTHERN AUCKLAND FREE KINDERGARTEN ASSOCIATION
INCORPORATED

t/a KAITIAKI KINDERGARTENS

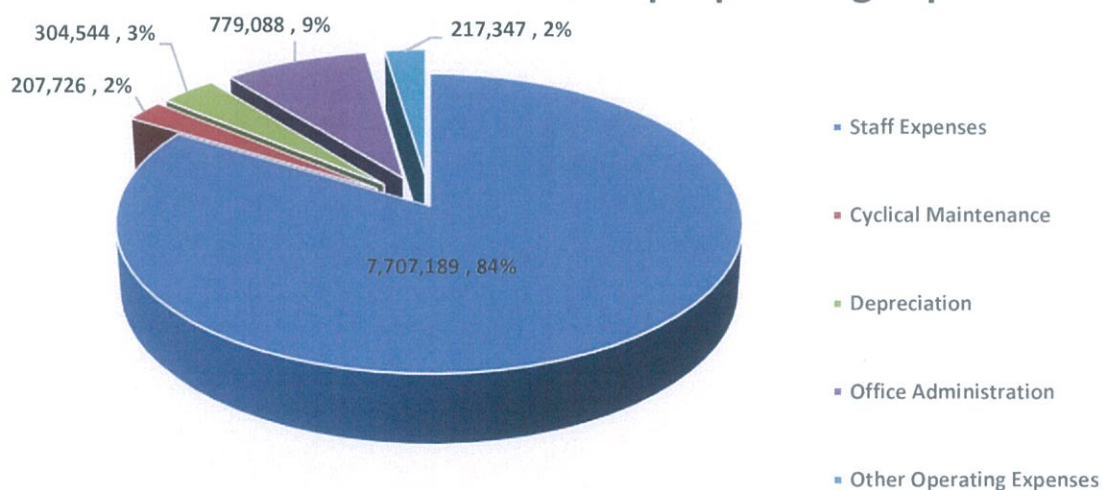
REVENUE & EXPENDITURE AS AT 31st DECEMBER 2021

Group Operating Revenue 2021



Total Revenue \$9,249,832

Group Operating Expenses 2021



Total Expenditure = \$9,215,894

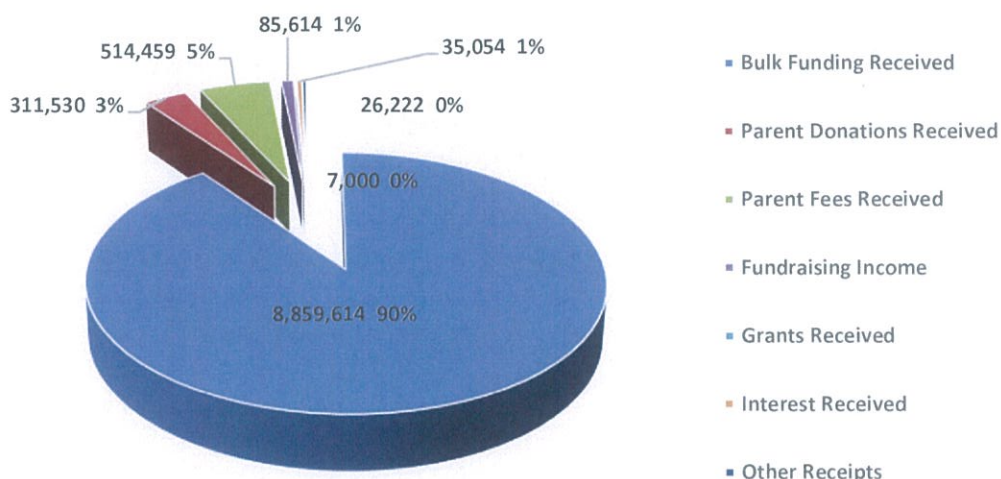
Net Surplus for the year ending 31 December 2021 = \$719,906

NORTHERN AUCKLAND FREE KINDERGARTEN ASSOCIATION
INCORPORATED

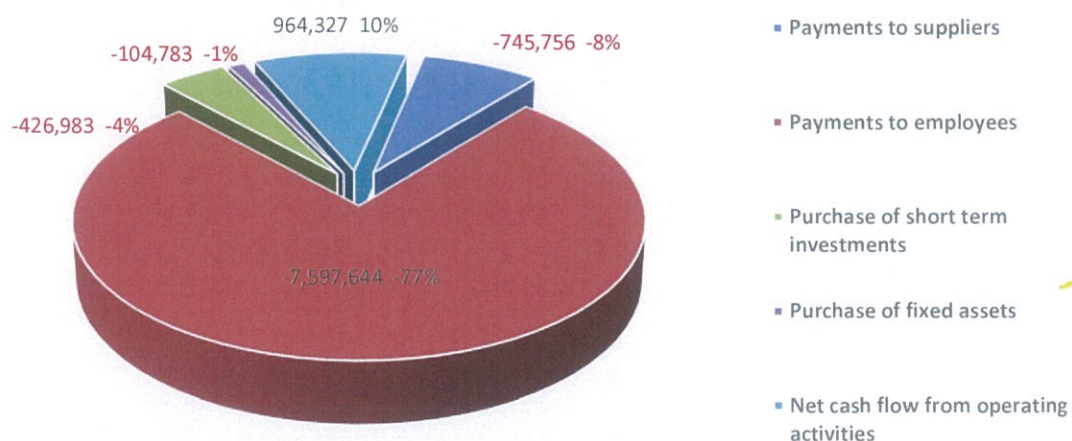
t/a KAITIAKI KINDERGARTENS

CASH FLOW FROM OPERATING ACTIVITIES AS AT 31st DECEMBER 2021

Cash Flow In from Operating Activities = \$9,839,493



Cash Flow Out from Operating Activities = -\$8,875,166
Net Cash after Operating Activities = \$964,327



BOARD MEETING ATTENDANCE – 2021

10 OFFICIAL MEETINGS TOOK PLACE

BOARD MEMBER	TOTAL # OF MEETINGS ATTENDED
Paul Geden	10
Nicole Thompson	10
Grant Mitcheson	9
Tui Skelton	10
Joanne Hough	0
Alexia Mesnage	8
John Lewis	10
Ivor Peksa	8
Andrea Leeper	2

NOTE

I.Peksa was appointed at the April AGM, J.Hough resigned at the April AGM and A.Leeper resigned in May.

LIFE MEMBERS

Grant Mitcheson
Pam Dalton
Pat Davies
Melanie Jack
Robbie Pickford

ACKNOWLEDGEMENTS

We wish to acknowledge and thank the friends and supporters of the Northern Auckland Free Kindergarten Association Incorporated t/a Kaitiaki Kindergartens. Your support is instrumental in helping us achieve amazing results and we look forward to strengthening the relationship in 2022.



Helensville Lions Club
- New Zealand





**Northern Auckland Free Kindergarten Association Incorporated
T/A Kaitiaki Kindergartens**

Address:

44c Anzac Road, Browns Bay, Auckland 0630

Phone:

09 479 5869